

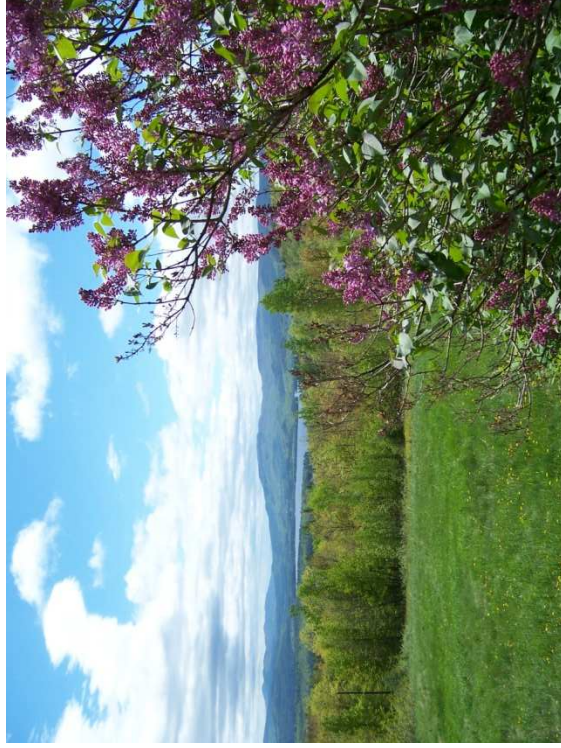
Every Acre Counts

The Newfoundland Watershed Master Plan

Every Acre Counts

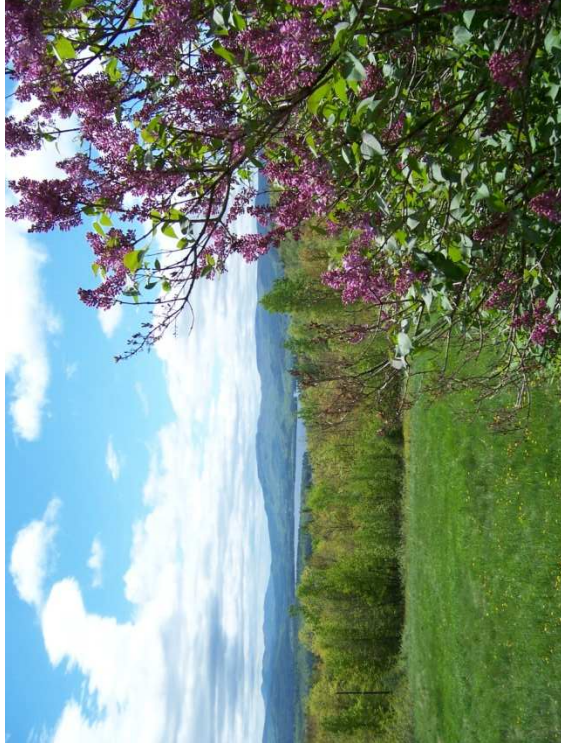
The Newfoundland Watershed Master Plan

- **Identifies threats to our shared natural resources** and specific implementation actions designed to protect them.
- **Promotes an understanding of the shared resources in the region** on a watershed scale, a scale that goes well beyond individual town boundaries.
- **Is a pro-active step** that is more cost effective than restoration efforts would be in the future.
- **Provides a comprehensive analysis of the Newfoundland Watershed** and creates a “tool kit” of implementation actions.



Watershed Master Plan Products

- Executive Summary
- Volume 1 - **Every Acre Counts**
- Volume 2 - *Supporting Technical Products*



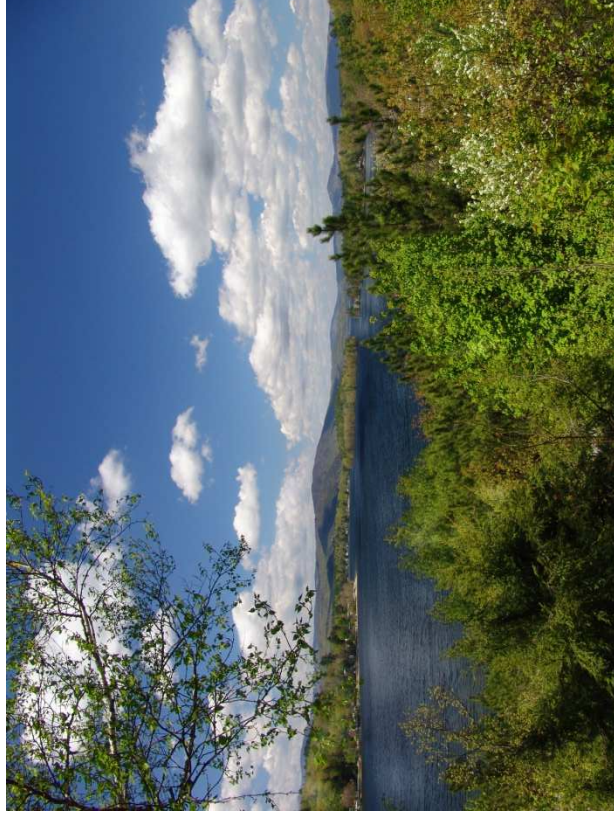
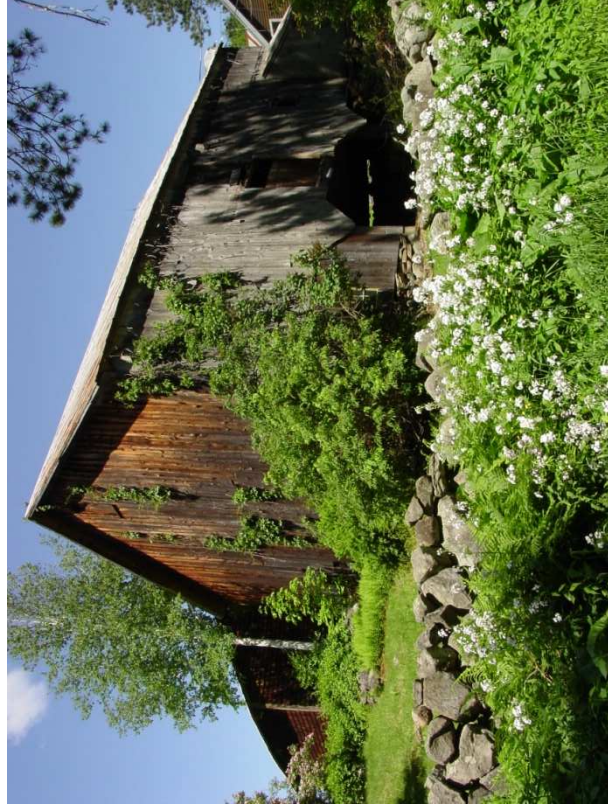
Volume 2 - Supporting Technical

Products

- **Newfound Lake Tributary Assessment: Water/Phosphorus Budget** - *University of New Hampshire Center for Freshwater Biology*
- **Newfound Lake Watershed Assessment** – *University of New Hampshire Center for Freshwater Biology*
- **Geology of the Newfound Watershed** – *Newfound Lake Region Association*
- **Wildlife Habitat in the Newfound Watershed** – *New Hampshire Fish and Game Department*
- **Fish Species within the Newfound Watershed** - *New Hampshire Fish and Game Department*
- **Forest Resources in the Watershed Communities** – *New Hampshire Timberland Owners Association*
- **Strategic Conservation Efforts in the Newfound Watershed** – *Society for the Protection of New Hampshire Forests*
- **Watershed Population and Housing Demographics** – *Jeffrey H. Taylor and Associates*
- **Assessment of Master Plans and Land Use Regulations** – *Jeffrey H. Taylor and Associates*
- **2007 Survey of Watershed Communities** – *Plymouth State University Center for the Environment*
- **2009 Survey of Watershed Communities (pending)** – *Plymouth State University Center for the Environment*
- **Oral Histories of Life in the Newfound Watershed** – *Plymouth State University*
- **Math Lesson Worksheets** – *Nancy Stock, Bridgewater Elementary School*

Volume 1 – *Every Acre Counts*

- Section 1 – The Watershed We Share
- Section 2 – Our Shared Resources
- Section 3 – What’s the Word in the Watershed?
- Section 4 – Achieving the Watershed Vision



Newfound Watershed Vision:

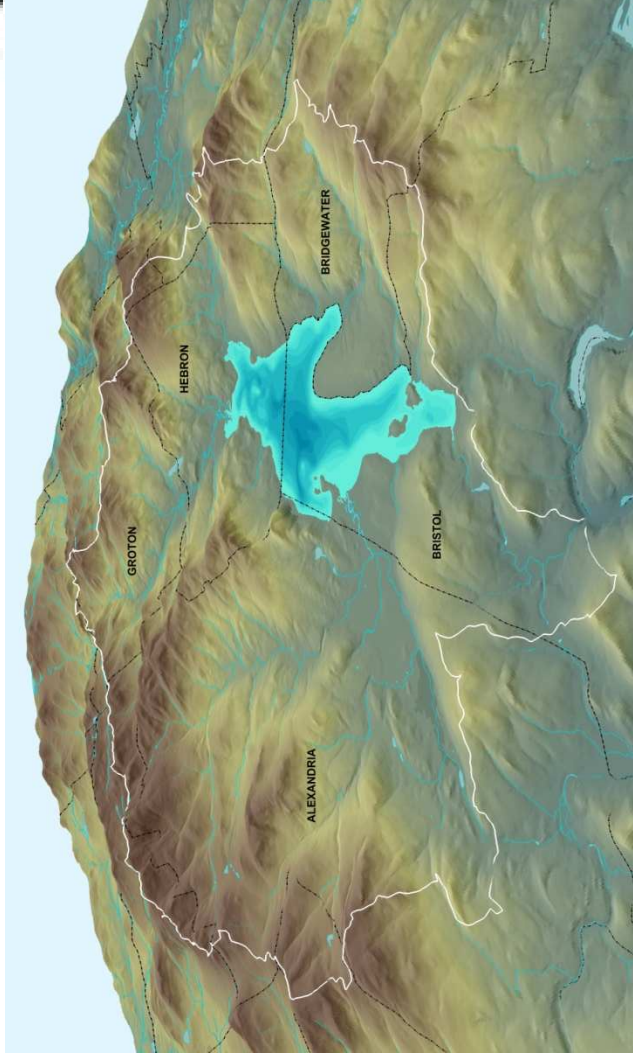
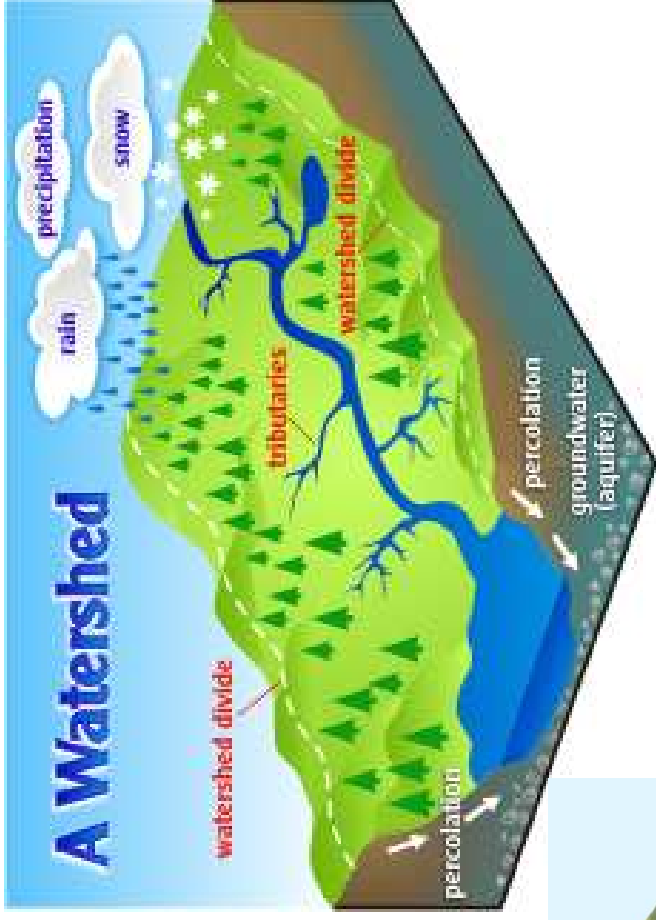
In the year 2020, we envision a Newfound Watershed where the quality of life and economic vitality continue to be fostered by stewardship and sustainable use of the watershed's natural resources, where land uses and development are balanced with conservation, and where the current water quantity and water quality have been maintained.

This Vision will be achieved by implementing the following strategies:

- **Creating sound land use plans** in each of the Watershed communities that achieve each community vision;
- **Preventing phosphorus and other pollutants from reaching surface waters** through local land use regulations;
- **Guiding development away from riparian buffers, wetlands, steep slopes, and other critical resources;**
- **Pursuing conservation opportunities strategically** to protect the health and beauty of the Watershed; and
- **Creating a sense of stewardship by providing education opportunities** for students, land owners and visitors.

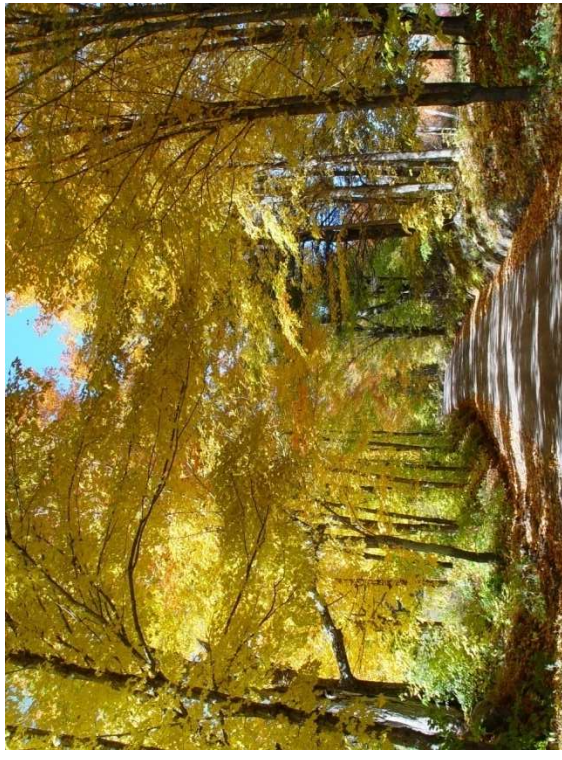
Section 1 – The Watershed We Share

- What is a Watershed?
- Physical Setting of the Newfoundland Watershed



Section 2 – Our Shared Resources

- Surface Water
- Ground Water
- Wildlife Habitat
- Fisheries
- Forest Resources
- Strategic Conservation
- Population and Housing Trends
- Assessment of Town Master Plans and Land-Use Regulations



Section 3

What's the Word in the Watershed?

- Property Owner Surveys
- Oral Histories
- Curriculum Development for Public Schools



Section 4

Achieving the Watershed Vision

- Strong mandate to undertake the *Every Acre Counts* project.
-Vision statements of local master plans, results of the 2007 Community Survey, the Oral History interviews and growing membership in the NLRA by Watershed towns (Alexandria, Bridgewater, Bristol, Groton and Hebron in 2009).
- The vision for the Newfound Watershed will not be achieved without local commitment to implementation.
- The implementation process will also be supported by volunteers from the Watershed communities who have agreed to participate in the *Newfound Watershed Coalition*.
- This Watershed-wide effort will ensure that communication and cooperation continue across town boundaries as we work together to achieve the Watershed vision.

Next Steps

- Collect feedback on *Every Acre Counts* this summer
- Complete *Every Acre Counts* – September 2009
- Adopt *Every Acre Counts* as addendum to Town planning documents – 2009 / 2010
- Continue education and outreach in the Watershed
 - ongoing
- Complete demonstration project(s) – 2010 / 2011
- Assist Towns (e.g. ordinance prioritization and development - shared Planner) - 2010.

Questions and Comments?

Steve Whitman

536-5037

swhitman@jhtplanning.com

Boyd Smith, NLRA

744-8689

nlra.boyd@metrocast.net

