

## NOTES FROM THE NEWFOUND LAKE REGION ASSOCIATION

Visit Our Website...  
[www.newfoundlake.org](http://www.newfoundlake.org)



## Board of Directors:

Don Martin, *President*  
 Victor Field, *Vice President*  
 Ken Weidman, *Treasurer*  
 Helga Stamp, *Secretary*  
 Peter Carey, Dave Carlson, Jan Collins,  
 Bill Fay, Noah Munro, Greg Wagner, *Trustees*  
**Staff:**  
 Boyd Smith, *Executive Director*  
 Martha Twombly, *Program Director*

E D U C A T I O N • C O N S E R V A T I O N • S T E W A R D S H I P



Eagles Scavenge from Coyotes on Newfound Lake, January 2009  
 ©2009 Ronald W. Collins, GC Photography and Video – All Rights Reserved

### “Newfound Land Conservation Partnership” is Born!

The NLRA is proud to introduce the Newfound Land Conservation Partnership (NLCP). The NLCP connects the Society for the Protection of NH Forests, the Lakes Region Conservation Trust and the NLRA to increase the pace of land conservation in the Newfound watershed. The Newfound watershed is a special place filled with productive forests, richly diverse habitat, productive agricultural lands, pristine waters and beautiful villages. Conserving critical lands is one way to protect these priceless natural resources, and the NLCP provides a means to facilitate this work.

The NLRA Land and Watershed Committee will help assess and prioritize potential conservation opportunities and provide a local resource for interested landowners. The Forest Society and the LRCT will share their expertise in conservation transactions and will hold any easements. The NLRA will assist with long-term monitoring of protected lands to help maintain easement agreements. Funding for this initiative was provided by the NH Charitable Foundation, with matching gifts from private donations.

If you are interested in land conservation, contact Martha at 744-8689, or [nlra.martha@metrocast.net](mailto:nlra.martha@metrocast.net).

### Watershed Master Plan — Framework for Success

Every Acre Counts: The Newfound Watershed Master Plan is entering the home stretch. Most of the scientific work has been completed, and the writing has begun. Major pieces include water quality data from the lake and its tributaries; a watershed-wide community survey; analysis of local master plans, regulations and demographic trends; and personal interviews with local figures. The final Watershed Master Plan (WMP) will be a natural resource planning document with recommendations to protect land and water that can be used as a management “tool kit” by all watershed towns.

To prevent the WMP from languishing, the NLRA is meeting with local Boards to raise awareness and gather input for the final WMP. We are submitting articles to the Record-Enterprise that introduce major pieces of the WMP. Our goals are for the WMP to be accepted by each town for use as a planning tool, and for critical recommendations to be adopted by popular vote at town meetings as effective ordinances. Neither of these desirable outcomes will occur without broad popular awareness, understanding and support.

You can be part of this important planning effort by learning about the WMP ([www.newfoundlake.org/watershedmasterplan](http://www.newfoundlake.org/watershedmasterplan)), joining our Steering Committee, and speaking to your friends, neighbors and local Board representatives.



Presorted Standard  
US Postage  
PAID  
Permit No. 9  
Jaffrey, NH

Newfound Lake Region Association  
800 Lake St. • Bristol, New Hampshire 03222  
Telephone and facsimile: 603.744.8689  
Email: info@newfoundlake.org

Visit us online at:  
[www.newfoundlake.org](http://www.newfoundlake.org)

# Calendar

## NLRA Workshops and Events –

Check online for additions: [www.newfoundlake.org](http://www.newfoundlake.org)

- April 13 **Watershed Committee Meeting, 1–3 p.m., Pleasant View B&B, 22 Hemphill Rd., Bristol (please RSVP to NLRA by April 10).**
- April 21 **Ben Killham on Bears, sponsored by Trout Unlimited, Common Man, Plymouth 7:30**
- May 4 **NH Water Management Strategy, 7–9 p.m. Bristol Town Office**
- June **Save the Date! Watershed Master Plan – Draft Roll-Out (date and location TBD)**
- June 27 **Naturally Newfound Fair –10 to 3, Ash Cottage Audubon, Hebron**
- July 7 **“Taste of Newfound”, Bridgewater/Hebron Elementary School**
- July 18 **NLRA Annual Meeting, Potluck and Silent Auction, 4–7 pm, location TBD**
- September **See May Newsletter! Final Watershed Master Plan – Presentation and Workshop for local Boards and community leaders (date and location TBD)**

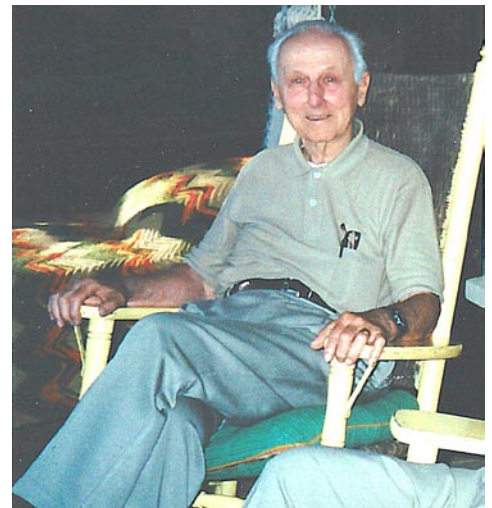
## Dedication

This newsletter is dedicated to our great friend and NLRA founding member, Milt Radimer, who passed away Fall 2008. Milt was known and loved for his passion about Newfound Lake and for his infinite positive energy and friendship. His spirit remains with us through his wonderful children and grandchildren and through our water quality monitoring programs that he initiated and inspired.

**Use GoodSearch:** [www.GoodSearch.com](http://www.GoodSearch.com) has a unique social mission: every time you use GoodSearch as a search engine, a donation will be made to the NLRA! It's powered by Yahoo! for great search results – sign up today!

## Giving in the Holiday Spirit!

Special thanks to new member Chris Demers, who donated \$250 on behalf of his family for Christmas – a member renewal for his parents, and four NEW memberships for himself and three siblings.



Milt Radimer, friend and mentor

