



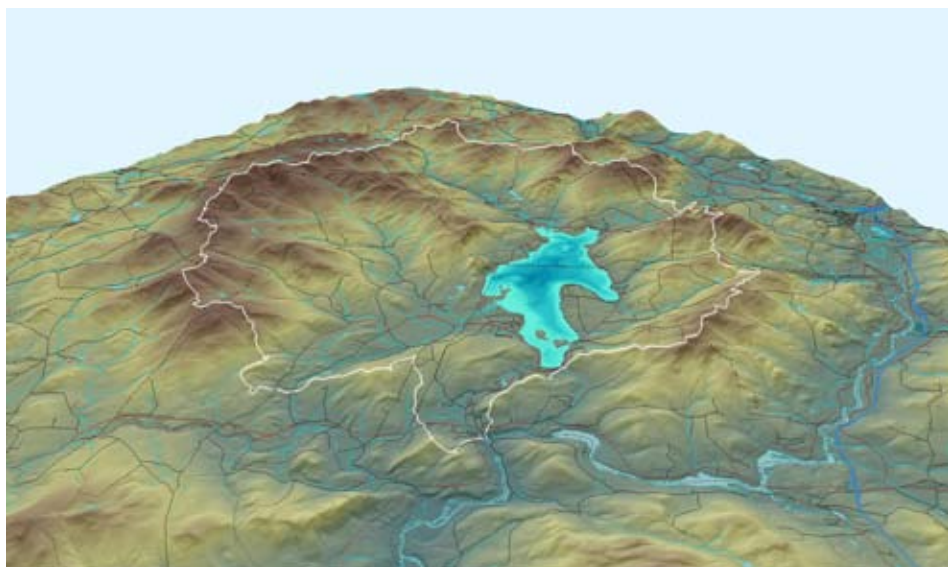
# The Monitor

THE NEWSLETTER OF THE NEWFOUND LAKE REGION ASSOCIATION

## *Funding for Phase II of “Every Acre Counts” Approved!*

On March 10th Steve Landry, NH Department of Environmental Services (DES) Project Manager informed us that the USEPA approved our scope of work to implement key recommendations from Every Acre Counts: The Newfound Watershed Master Plan. As Program Manager, the Newfound Lake Region Association will work with the DES to develop a contractual grant agreement to submit to the Executive Council and Governor for approval, and will be responsible for overall project success.

Project work elements include: classifying Newfound as a High-Quality Water of special significance; continuing deep-lake monitoring and expanding tributary monitoring further into the watershed; providing a shared professional planner to assist watershed towns with master plan and ordinance development; designing and constructing a highly visible and effective storm water treatment project; inventorying and assessing watershed culverts; analyzing and presenting study results in GIS format; and increasing communications capacity to present project results and recommendations, increase transparency in local decision making, and highlight



Schematic 3-D view of the Newfound River Watershed

local best management practices.

We anticipate working with technical partners Bob Craycraft (UNH), Brian Eisenhauer (PSU); Steve Whitman (Jeffrey Taylor & Associates); and Dan Sundquist (Society for Protection of NH Forests). Other key partners include the NH Departments of Environmental Services, Fish and Game, and Forests and Lands, along with our watershed Towns, businesses and citizens. This project will be a challenge to manage, but it offers the promise of the incredibly rich reward of long-term, sustainable

protection of our shared environmental, social and economic resources.

This 30-month project will receive roughly \$128,000 in federal funds and contribute nearly \$110,000 in partner and volunteer labor match. Combined with the Watershed Master Plan Volumes I and II, completed in October 2009, total investment obtained by the NLRA to preserve Newfound Lake and its watershed will be \$312,000 in federal funds and roughly \$300,000 of labor match over a five-year period. You can

*Continued on page 8*

## From the Executive Director

Greetings from Newfound, where ice-out is fast approaching as the snows recede up the ridgelines. What a year in 2009 – what an amazing year ahead in 2010! Hopefully this Newsletter will whet your appetite to join us for some of our exciting and rewarding events and volunteer opportunities while you savor the many pleasures of the Newfound experience. There is important work to be done, and I am pleased to say your watershed organization is ready to do our part.

In 2009 we used our renewed Mission Statement as the lens through which to view all programs and activities. With so many options but limited resources, we are always challenged to bring the most benefit to our members. Last year we began developing measures of success for our various programs, including building

a culture of leadership, to objectively assess our progress towards our mission. In February the Trustees and staff met under the steady and able guidance of member Rosemary D'Arcy to continue building on our 2009 momentum. For 2010 we have set ambitious goals to revise our bylaws, increase leadership and volunteer recruitment and retention, assess the potential for a planned giving program, and increase membership growth.

I am thrilled to welcome new Trustees Rob and Laura Moore, who have lifelong connections to Newfound Lake and bring many years of experience in education, communications and non-profit leadership to the NLRA, along with boundless passion for our mission. I am also pleased to welcome Nikki Wooster-Goodwin of Alexandria as our new Program Director. Nikki was the Search Committee's

top choice out of more than 30 qualified applicants. She brings a level of business savvy and enthusiasm that fit perfectly with our plans for the upcoming years. A BIG THANK YOU to Search Committee members Jerry Anderson, Helga Stamp and Ken Weidman, who brought this important process to such a high level of professionalism!

I hope you enjoy this Newsletter, and that we have a chance to see each other this year. As always, don't hesitate to give me a call if you have any questions or ideas for your year 'round water watch dog, or if you want to become more involved with the NLRA.

See you around the Watershed!

*Boyd Smith, Director*

744-8689

*NLRA.Boyd@Metrocast.net*

## Chairperson's Message

Happy spring to you all! Spring, summer, fall, winter – It is always beautiful at Newfound! We have such a wonderful place to live, visit, experience, and I hope all of you enjoy it as much as I enjoy this paradise. Also, I want to congratulate our staff, our trustees, our supporters, our members, and our volunteers for working so hard to help preserve our way

of life. As some of you already know, we have acquired the grant to implement the Watershed Master Plan. This is exciting news and we look forward to continuing to make a difference. We will need all of your help to support this effort in each of our towns. We have hard economic times and we have many changes going on in all our surrounding towns but we need to keep our environment, our safety,

our quality of life as a foundation piece in all our future efforts. Please participate and voice your concerns in your town and community and continue to work with NLRA to protect our Newfound Way of Life.

Thank you and I look forward to working with you this summer.

*Jan Collins, NLRA Board Chair*



*The Monitor* is a publication of the Newfound Lake Region Association.

**NLRA Officers and Executive Committee Members:**

Jan Martin, *President*; Victor Field, *Vice-President*; Ken Weidman, *Treasurer*; Helga Stamp, *Secretary*; Trustees: Pete Carey, Dave Carlson, Bill Fay, Don Martin, Laura Moore, Rob Moore, Noah Munro, Greg Wagner; Staff: Boyd Smith, *Executive Director*; Nikki Wooster-Goodwin, *Program Director*; Karen Boyd, *Volunteer Membership Coordinator*

**NEWFOUND LAKE REGION ASSOCIATION**

800 Lake St. Bristol, NH 03222 P: 603-744-8689 [info@newfoundlake.org](mailto:info@newfoundlake.org)

## Introducing Your New Program Director

**H**ello Everyone! My name is Nikki Wooster-Goodwin and I am so very proud to introduce myself to all of the members of the NLRA. I started work on February 1, 2010, and it has been a pleasure and an honor to become a part of a mission that I find so very important. I have spent the better part of the past fifteen years in the outdoors and our natural environment, working independently as a licensed NY State Rock Climbing Guide, an independent hiking guide and Wilderness EMT under contract with the Appalachian Mountain Club and Eastern Mountain Sports. I am a business woman and for the past



New Program Director Nikki Wooster-Goodwin and pal Marley in Franconia Notch

six years my husband, Steve, and I have owned our own restoration, salvage and auctioneering business where our motto has been “Recycle, reuse and reinvent” the architectural materials in your home. I am proud to say that we have prevented many a useful object from entering our local landfills.

As your Program Director, I will deliver NLRA’s mission statement to all who will listen. Newfound Lake and its watershed are treasures and to work with a group of like-minded individuals is a dream come true.

*Nikki Wooster-Goodwin*

---

### Save the Date — May 8: NLRA Volunteer Party at The Mill Fudge Factory in Bristol

**O**n May 8, from 5:00 pm to bedtime, the NLRA and The Mill Fudge Factory will be hosting a fun-filled, meaningful and memorable evening to energize and thank our “veterans” and to bring new volunteers into the NLRA fold.

The evening’s activities will include: short overviews of important volunteer opportunities by NLRA staff, volunteers

and partners (5 – 5:45); volunteer signup and socializing (5:45 – 6:30), raffle drawing for \$50 gift certificate to The Mill Fudge Factory (6:30-ish); Justin Jaymes kicks off the tunes (7:30)!

#### *Why should you come?*

- Eligible to win a \$50 gift certificate to The Mill Fudge Factory!
- Receive a free NLRA t-shirt and entrance

to the Naturally Newfound Fair!

- Free admission to the Justin Jaymes concert!
- Get involved with others to protect Newfound and its beautiful watershed!
- Tell us about your interests!
- Food available from The Mill’s menu (your nickel) and all returning and new volunteers enjoy the evening’s live music for free!

### Save the Date — June 26: It’s time for the Naturally Newfound Fair!

**O**kay everyone, let’s clear the calendar for Saturday the 26th of June because we want you to meet us at Ash Cottage in Hebron for the Naturally Newfound Fair! The Fair is gearing up to be our biggest yet, and here’s why!!! Entertainment: The Steel Drum Band of Troy and Fitzwilliam; Plymouth’s Tiger Theatre and their original environmental production The Green Tiger; the Uncle Steve Band to keep your toes tapping; and Lakes region radio station WLNH

98.3 to help us celebrate! There will be fly-fishing demos; master gardeners to answer your green thumb questions; vendors selling hand-made wares; a pie-baking contest judged by local culinary experts, with the inscribed Newfound Fair Pie Plate plus cash winnings!

There will be, and don’t be sad, admission (\$5 for adults, under 16 for free), but before you get really cranky about it, let me explain. The NLRA wants

to provide an incredible, excellent and memorable experience to all Fair goers as well as benefit the organization that works year ‘round to protect Newfound and its watershed. Your admission helps pay for all our traditional Fair events as well as exciting new entertainments that will make this Fair truly spectacular. So turn the frowns upside down and come and have a blast at the Naturally Newfound Fair!

# Programs

We are excited about some changes to this year's programs. While we plan to focus on the "Big Five" (Lake Hosting, Weed Watching, Lake Lay Monitoring, Tributary Monitoring and our Newfound Eco-Tours), our goal is for these programs to be so rewarding we'll have waiting lists for all the volunteers and guests wanting to be part of the action! Some of the major changes are outlined in this part of your Newsletter. Contact Nikki (744-8689, NLRA.Nikki@Metrocast.net) to sign up or learn more (and then sign up)!

## Lake Hosting

Lake Hosting is one of our most visible and important ways to protect Newfound Lake. In 2009 NLRA Lake Hosts provided courtesy inspections of more than 3,000 boats that accessed the Lake from the Wellington ramp, and removed five samples of invasive species while educating boaters about the risks of such pests. What an amazing accomplishment! Yet the threat is real and this year we need help from both past and future volunteers to keep Newfound invasive-free.

## Lake Lay Monitoring

2010 will be our 25th consecutive year of monitoring Newfound's deep water quality! This is an amazing demonstration of commitment to understanding water quality trends. In large part, the work of our Lake Monitoring volunteers

is the basis for a reputation for citizen science that helped us win over \$300,000 in federal watershed planning funds in the past five years.

Data collected by our volunteers, under the guidance of UNH scientist Bob Craycraft, provide an excellent baseline on water quality. Worriedly, while Newfound is still considered a high quality water, there are indications that quality is declining near Mayhew Island and in Pasquaney Bay (see latest report at <http://www.newfoundlake.org/watershedmasterplan/themasterplan.html>). Because of these trends, it is even more important and urgent to earn the support of our mission from the entire Newfound watershed community. It takes everyone working together to make a difference. Become a Lake Lay Monitoring and unleash your citizen-scientist passions and skills!



## Weed Watching

Our Weed Watchers are trained to monitor aquatic growth along Newfound's shoreline and report changes in native plant populations while watching for invasive weeds. This information helps us understand important aspects of the Lakes' health, such as the amount of sediment and nutrients, as well as provides early-warning to attack invasive species. If you want to be a Weed Watcher, the crew would love to have you!



Touring the lake on the NLRA pontoon boat.

# Programs

## *Juiced Up for 2010 - Newfound Eco-tours*

If you thought the NLRA Floating Classroom was cool, wait until you try a Newfound Eco-Tour! Building on the concept that on-site education and the “big-picture” visual perspective gained from a tour on the Lake are powerful medicine for conservation and stewardship, the 2010 Eco-tours offer two-hour, informational experiences on the NLRA’s trusty pontoon boat. Guests will have a chance to measure water quality, learn about the watershed’s natural history, and be introduced to the NLRA. Tours are planned for Fridays and Saturdays at 10 am and 1 pm during July and August, with additional weekday afternoon tours possible as demand dictates.

Friday and Saturday tours will begin and end at Paradise Point and stop at Wellington State Park for a quick dip and refreshments, before continuing around Belle and Cliff Island and navigating The Broads on the return voyage. Weekday tours can be tailored to guests’ wishes. Reservations will be required and Eco-Tour admission will include the Wellington State Park fee. Watch our eNewsletter and web site or contact Nikki for more information (744-8689 or NLRA.Nikki@Metrocast.net).

Newfound Eco-Tours will provide a wonderful opportunity to experience the beauty and history of Newfound, and to give friends and family the chance to create wonderful memories on one of the most treasured lakes in the world!

*Guests will have a chance to measure water quality, learn about the watershed’s natural history, and be introduced to the NLRA.*



Davis Brook Pond, May 2009



## *Tributary Monitoring*

More than 75% of Newfound’s water comes from its tributaries. By monitoring the tributaries, we can better understand where and how contaminants such as sediments and nutrients are being introduced. If you are wondering how to protect water quality on your property, take a few moments to read Volume I of Every Acre Counts: The Newfound Watershed Master Plan (on line at <http://www.newfoundlake.org/watershedmasterplan/themasterplan.html>).

This year we will begin monitoring tributaries farther from the Lake and higher up in the watershed. Sign up to monitor your favorite tributary, learn how to collect critical data using state-of-the-art equipment under the patient tutelage of Bob Craycraft and your fellow volunteers, and be part of a critical data collection and analysis project to help protect the Newfound watershed!

# Around the Lake

## Major Projects Pending – Coordination is Critical

There are three major projects in the pipeline for Bristol and parts of Bridgewater. If funding is obtained, and with a bit of good will, there is the possibility to coordinate the projects, create overall cost savings, and apply the savings to drainage improvements that will reduce the threat of storm water impacts to the Lake.

**Public Sewer.** Many of you know of the long-standing efforts by leading Bristol citizens to extend public sewer along West Shore Rd. and Rte. 3A in Bristol. The worthy goal of these leaders is to protect Newfound's water quality from failing septic systems. While the \$28,000,000 project price tag is not trivial, the Town recently voted to hold a special meeting in May to approve bonding of up to \$7,000,000 if grant funding for \$21,000,000 is approved by the Rural Development Authority. You can see the proposed sewer line layouts at [http://www.townofbristolnh.org/Departments/Water%20and%20Sewer/additional%20links/sewer\\_to\\_1\\_map.html](http://www.townofbristolnh.org/Departments/Water%20and%20Sewer/additional%20links/sewer_to_1_map.html).

**Route 3A Improvements.** The NH Department of Transportation (DOT) is planning a \$3,400,000 series of road work on Rte 3A from downtown Bristol to Pasquaney Bay. The NLRA has met with the DOT and NHDES to discuss drainage improvements as part of the planned work, and DOT managers have expressed interest and willingness to cooperate. The purpose of the drainage improvements is to reduce the impacts of storm water runoff from the roadway to the Lake.

**Central Square.** At their March 13 town meeting, Bristol residents approved a 20% match (roughly \$98,000) to fund

Central Square improvements if an anticipated grant for the remaining \$400,000 is received. The project will include improving traffic flow and pedestrian access and safety in the Central Square area. There is also momentum building to reconnect the Square to the Profile Falls Park and federal conservation land via a crossing over the Newfound River near the former Water St. bridge. This important step in making Bristol more "user friendly" and economically viable is an outcome of the design charrette attended by NLRA staff and members in late 2008.

NLRA Director Boyd Smith has been speaking with Bristol representatives Joe Denning (Selectman), Jeff Chartier (Water and Sewer Department Supervisor) and Paul Weston (Town Manager) about working with the various granting agencies to coordinate project scope and schedules. Our goals are to generate cost savings to apply to storm water management upgrades that will be part of the planned work and to reduce construction disruptions by streamlining schedules. With some focused effort, and if the stars align, we will contribute to a rare and important opportunity to create long-term value for our community without adding cost.

## 2010 Annual Mega-Raffle on Its Way!

Building on the excitement and success of our inaugural Mega-Raffle in 2009, the core Raffle Team (NLRA Trustees Noah Munro, Ken Weidman, Victor Field, and Director Boyd Smith) is at it again! Our goal is to reach even more local businesses for donations of fun and useful products, services and experiences to add to the list of prizes that last year topped \$6,000 in value, earned \$12,000 for the NLRA and added 20 new business members to the NLRA family of supporters. We expect to begin ticket sales in May, recruiting additional salespersons during our May 8th volunteer event at The Mill. Once again, NLRA member Dawn Lemieux has offered the services of her firm Venture Print, Unlimited to produce tickets, a contribution of more than \$1,000 to the cause. Thanks Dawn!

Our goals for this year are to reach everyone connected in any way to the Newfound Lake watershed and find proud new owners for all 5,000 tickets. Tickets will be available for purchase on our web site and at selected Newfound area locations by mid-May. The Mega-Raffle drawing will be held at the NLRA Annual Meeting on August 14. If you are

2010 Annual Mega-Raffle  
Chance to Win  
Adventure · Romance · Family Fun  
Drawing - August 14, 2010 - Alexandria Town Hall  
Need not be present to win  
Benefit:  
Newfound Lake Region Association  
800 Lake Street · Bristol, NH 03222  
[www.newfoundlake.org](http://www.newfoundlake.org) · 603-744-8689  
Tickets donated by Venture Print Unlimited, Inc.

5 Tickets for only \$20 (1 for \$5)

Printed on 100% post consumer recycled paper

NEWFOUND LAKE REGION ASSOCIATION

Name \_\_\_\_\_  
Address \_\_\_\_\_  
Phone \_\_\_\_\_  
Email \_\_\_\_\_

Please Print Clearly  
This information will not be shared or sold

Look for your book of 2010 Annual Mega-Raffle tickets!

# Around the Lake

interested in helping us reach our ticket sales and fundraising goals, please join us at The Mill on May 8 or call for one of the Raffle Team members at 744-8689 (email [NLRA.Boyd@Metrocast.net](mailto:NLRA.Boyd@Metrocast.net).) and start buying your lucky tickets (make great gifts for friends and family, too)!

## Guest Speaker for 2010 Annual Meeting

*“State of The Loon — The Natural History, Challenges, and Successes of Loons in New Hampshire”*

Have you ever wondered why a loon’s eyes are red? Why loon chicks ride on their parents’ backs? What loons are saying with those eerie calls in the night? Join biologist Harry Vogel of the Loon Preservation Committee as he talks about this unique symbol of New Hampshire’s wild lakes and its special place in the hearts of New Hampshire residents. Harry will talk about loons, challenges facing loons, and the Loon Preservation Committee’s work to safeguard New Hampshire’s threatened loon population

This year’s Annual Meeting will be on Saturday August 14th from 9:00 – 11:30 at the Alexandria Town Hall. We’ll start with coffee and pastries, then hold a brief business meeting, followed by Harry’s presentation and conclude with our 2010 Mega-Raffle drawing. For those who savor roast pork, the Alexandria Volunteer Fire Department’s annual pig roast starts at 12:00 pm, just up the street from the Town Hall.

Come join your friends and neighbors to protect Newfound Lake!



Annual Meeting guest speaker Harry Vogel's favorite subject

## Show and Tell – the Newfound Press Pool

Help build the watershed community with shared stories and photographs of Newfound life. We want to add your experiences to future eNewsletters issues of The Monitor. Become a “fan” and put a piece of yourself directly on the Newfound Lake Region Association

FaceBook page, submit photos and articles to my attention, or let me know if you want to be a contributor to the Newfound Press Pool. So much to talk about, so little time!

Thanks from Boyd / 744-8689, NLRA.  
[Boyd@Metrocast.net](mailto:Boyd@Metrocast.net).



# Around the Lake

## Reading the Forested Landscape

Adapted from an article by Marcia Morris, Record-Enterprise, March 25, 2010

Many of you intuitively understand the complex beauty of the rugged wooded landscape that surrounds us. But there are a few, like forester Jon Martin of ForeCo, who can read the forest like a book! Jon recently guided a group of Newfound residents through the Hebron woods, pointing out special features of the terrain and identifying tree species and habitat characteristics that he considers when planning a timber harvest or preparing a forest management plan.

Jon promotes sustainable forestry practices, which insure that timber harvesting will improve the health of the forest and the long-term value of your land investment. He helps landowners to meet their economic goals while improving recreation opportunities and wildlife habitat. As your forest manager, Jon negotiates with loggers, assists with permits, oversees harvesting operations, and insures that best management practices are followed to prevent damage to streams and wetlands. Jon can be reached at ForeCo in Rumney (786-9544) or jonmartin103@hotmail.com.

*Healthy, well-managed forests protect Newfound's exemplary water quality.*



Jon Martin teaching about managing forested landscapes

## Commercial Windpower Coming to Groton

You may have heard of the commercial wind project proposed for construction by Iberdrola Renewables in Groton. The project includes twenty four 2 Megawatt turbines to be constructed on Tenney Mountain and two adjacent ridges to the north. The towers are roughly 280 feet high with 130 foot-long blades for total height of roughly 400 feet. While this project will certainly alter the view

from many parts of the surrounding area, it will also provide carbon-free energy to thousands of New England homes.

As a recognized environmental steward, the NLRA expects to be asked about our position on this project, and is beginning these discussions at the Trustee level. Please let us know your thoughts so that we can best represent our members on this important issue.

.....  
*EVERY ACRE COUNTS Continued from page 1*

review these and other watershed-related documents on the NLRA our web site at <http://www.newfoundlake.org/watershedmasterplan.html>.

The NLRA would not have received this level of funding without the repu-

tation of environmental stewardship earned by 25 consecutive years of water quality monitoring and our many other programs and workshops related to protecting Newfound's quality of life. These accomplishments are the legacy of pre-

vious NLRA volunteers, members and staff, and we thank all of you who helped lay the foundation for these exciting and critical next steps!

## 2009 Financial Summary

In spite of record lows in the national economy, by the end of fiscal 2009 the NLRA remained on sound financial footing. Our successes are the result of several factors: continued support from our members, frugal budgeting by Trustees and staff, and a return of the value of our endowment investments through the expertise of your Investment Committee (Dick Byer, Bob Rooke, and Roger LaFontaine). In addition, income from DES (watershed grant), the NH Charitable Foundation (land conservation initiative), and our successful Mega-Raffle helped close a roughly 10% drop in budgeted Annual Fund revenues.

The NLRA has an excellent system of financial controls. The financial team includes our Director, Treasurer and outside bookkeeper to manage accounts on a monthly basis. Our Trustees review organizational finances quarterly, and an independent CPA performs a financial review and prepares our federal 990 tax forms and State of NH reports at year-end. Material portions of the 2009, 2008 and 2007 financial reviews are available on the NLRA web site at <http://www.newfoundlake.org/home/aboutnlra.html> (contact Boyd Smith or Ken Weidman for additional information). In 2009 we changed our fiscal year to end in September to better match our revenue and expense cycles. Due to our change in fiscal year, 2009 nine-month results are not readily comparable to previous years.

The accompanying charts summarize our concentration of support and functional expenses for the nine-month period ending September 2009.

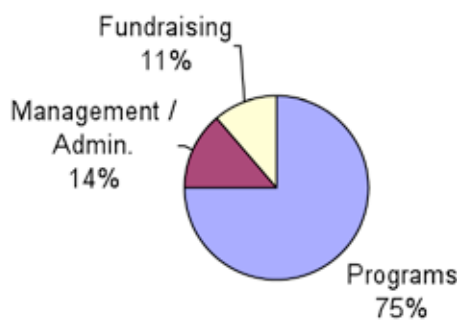
Notable under concentration of support is the significant proportion of grant-

related revenue from the NHDES (watershed master plan) and NH Charitable Foundation (land conservation initiative). Roughly 80% of watershed funds “passed through” to project subcontractors, while 60% of the land conservation funds are reserved for future projects. The NLRA continues to rely on membership support, which meets roughly 80% of our operating expenses.

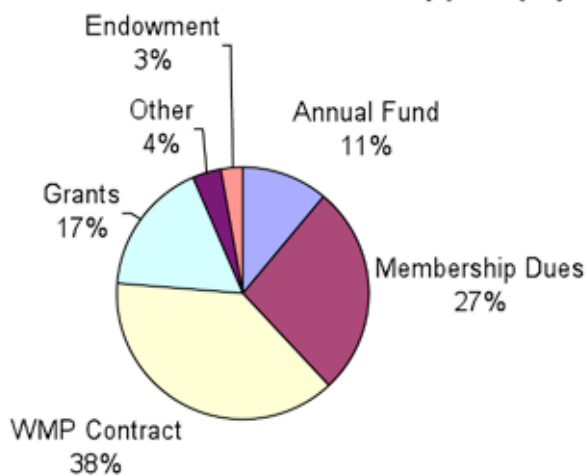
With the continued support of members, addition of new members, income from phase II watershed grant funding, and projected incomes from programs and events we hope to attain a balanced budget in 2010 and to continue offering quality programs and services that protect Newfound’s land and water for years to come.

*Ken Weidman, Treasurer*

**NLRA - 2009 Functional Expenses (%)**



**NLRA - 2009 Concentration of Support (%)**



# My First Three Months on the Job!

Whenever I start a new job, I always yearn for the three month mark. At three months, you're 'Old Hat.' You know what your expectations are. You know, to a certain degree, what your goals and objectives are and how to accomplish them. You feel like you belong within that position because the passage of time has given you the comfort of familiarity. Let me take you on my three month journey so you can better know me and my experience.

## Day 1

Nervous. Dressed up in clothes I dislike because they are dress-up clothes and I don't feel like myself in them. I open the door to my new office space and I see my new coworker, my only coworker. What will it be like to work with just one person on a day to day basis? What if he is uncool or not fun or a stick in the mud? My first words: "How are you Boyd?" Boyd's first words: "I am nervous. I am so glad you are not dressed up, like in a dress. My style is slightly understated...or at least, that is what people tell me." Big sigh of relief from me. No dress-up clothes and I can be myself and be productive!

## Month 1

I meet so many people through phone calls and e-mail that I can barely keep everyone straight. I introduce myself. I try to calibrate my acceptance in the association. I try to understand the legacy that Martha left behind and I slowly start to integrate myself as your new Program

*I became distinctly aware of what the NLRA offers and the importance that it plays to all of the watershed communities.*

Director. I become distinctly aware of what the NLRA offers and the importance that it plays to all of the watershed communities. I stand up at my local town tax meeting and I speak for the NLRA and I am shaking because I am so new to the association, and the article passes! Yes!

## Month 2

I have new responsibilities and I like that. I like having too many things to do and for the most part, I like to be overwhelmed. It is just who I am. I also like to promote change. Change allows us all to grow as individuals and I want to feel like I am always growing as a person. I have brought levels of change to the association, not because the NLRA needs drastic changes but because my personality is new to this association and I have things to offer that are distinctly me. I have also changed because of the NLRA in many ways. My levels of awareness have increased concerning so many issues that threaten the lake. Bob Craycraft took me on a day of Stream Sampling and I was exposed to the dangers of erosion and what it can do to our bodies of water if not properly managed. Eye-opening.

## Month 3

Today is April 15 so I am now in that third month...that blessed third month and I have a smile on my face. I am smiling because I have met so many wonderful people that collaborate to make the NLRA a success. I have shaken hands with NLRA members, conservation officers, police officers, fire department volunteers, historical society representatives, local business owners, news reporters and watershed residents. I have talked to them about Newfound Lake and they all have a story to tell, every single person. Isn't it amazing that a creation in nature such as a lake can actually link us all together in such a positive way? The phone just rang and I answered: "Newfound Lake Association, this is Nikki." The person on the line said "Oh my goodness. You have been there three months. You must be 'Old Hat' by now. She can't see it, but a big smile has spread across my face. I am Old Hat. Yes!

*Isn't it amazing that a creation in nature such as a lake can actually link us all together in such a positive way?*

## Membership - A Thank You and Request for Renewal

The Spring issue of *The Monitor* is one of our favorite, as we thank all our supporters from the previous year. The enclosure lists individuals, families, businesses, camps, foundations and towns that provided financial support to the NLRA in 2009. By the generosity of these benefactors, we are able to protect Newfound Lake and its watershed.

Of course, with the beginning of summer comes our request to renew your membership, a campaign that will begin shortly after you receive this Newsletter. Please watch for a membership renewal letter from NLRA. We encourage you to renew at your highest possible level, and to invite your friends and neighbors to join in supporting the Region's only year 'round water watchdog!

As part of our efforts to provide optimum service, we are collecting email addresses so we can provide full-color copies of *The Monitor* as well as more frequent information via our Newfound Watershed eNews. The request for emails will be included in the upcoming membership renewal. You can sign up for the Newfound Watershed eNews now at [www.NewfoundLake.org](http://www.NewfoundLake.org)! PS - we never share personal information outside of NLRA.

Thanks again to all of you who help make our work possible - please let us know how we are doing and if you wish to become more involved in your organization! Contact Boyd or Nikki at 744-8689 or [NLRA.Boyd@Metrocast.net](mailto:NLRA.Boyd@Metrocast.net) (Boyd), [NLRA.Nikki@Metrocast.net](mailto:NLRA.Nikki@Metrocast.net) (Nikki).

## Do It For the Family!

Give a gift of a family membership to the kids.

Newfound is family. Look around the lake and see the family cottages where generations of families have spent summers, some for over 100 years: Kids, grandkids, great-grandkids, all enjoying the natural beauty of Newfound and its Watershed. You know the cottages and families that I'm talking about: what a heritage that has been passed down to this generation.

How about following the tradition of passing ownership to future generations by gifting an NLRA membership to your sons, daughters and grandkids? What

better way for them to receive *The Monitor* with news of the Lake, the concerns of NLRA as Watchdog of the Lake and its Watershed, or frequent email updates about the Newfound area, and what better gift for a loved one for birthdays or the Holidays.

I've given family memberships to our kids as Christmas gifts resulting in a better understanding and buy-in by them to what NLRA's mission is and what the Lake and its Watershed means to its residents and local businesses.

*Ken Weidman,  
Bridgewater*



## 2010 Membership Form

**Member support is vital to help us protect the Newfound Watershed.  
Please renew your membership or join NLRA today!**

Please mail this form and your check, payable to NLRA, to:  
NLRA, 800 Lake St. Bristol, NH 03222.

Name \_\_\_\_\_

Email address: \_\_\_\_\_

Permanent Mailing Address: \_\_\_\_\_

Summer Mailing Address: \_\_\_\_\_

Please check here if you are interested in receiving email communications  
(web-based newsletters, annual report, news updates).

### Membership Categories:

- Steward \$2000+
- Newfounder \$1000-\$1,999
- Sustaining \$500-\$999
- Supporting \$250-\$499
- Maintaining \$100-\$249
- Family \$50-\$99
- Individual \$35-\$50

### Volunteer opportunities:

Please check all that apply.

- Lake Host/Invasive Species Protection
- Water Quality Monitoring/Education
- Watershed Mapping/Land Conservation
- Events/Publications/Outreach
- Membership Development
- Strategic Planning



## *The Monitor*

Newfound Lake Region Association


800 Lake St. • Bristol, New Hampshire 03222

Telephone *and* facsimile: 603.744.8689

info@Newfoundlake.org

Non-Profit  
Organization  
US Postage  
PAID  
Keene, NH 03431  
Permit No. 142

Visit our website for new  
information and upcoming workshops:  
[www.Newfoundlake.org](http://www.Newfoundlake.org)

 Printed on recycled paper.

# Calendar

### May 8

Volunteer Recognition and Recruitment. 5 pm to Bedtime,  
The Mill Ice Cream and Fudge Factory, Bristol

### May 20

New Hampshire Lakes Region Conservation Plan. 7 pm, Town Hall,  
Bridgewater

### June 26

Naturally Newfound Fair, 10 am to 4 pm, Ash Cottage, Hebron

### July – August

Newfound Eco-Tours: Two-hour tours departing 10 am and 1 pm,  
Fridays and Saturdays (additional weekdays by appointment),  
from Audubon Paradise Point, Hebron

### August 14

Annual Meeting (Loon expert and guest speaker Harry Vogel)  
and Mega-Raffle Drawing. 9 to 11:30 am, Old Town Hall, Alexandria

*Workshops and Events – Check [www.newfoundlake.org](http://www.newfoundlake.org) for updates!*

Have you renewed your membership for 2010? See the membership form on page 11.