



# The Monitor

THE NEWSLETTER OF THE NEWFOUND LAKE REGION ASSOCIATION

## Every Acre Counts: The Newfound Watershed Master Plan

It's official – work on the long-awaited Watershed Master Plan began in early July! The title of our master planning effort – Every Acre Counts - reflects its connection to all parts of the 63,000 acres that form the Newfound Lake watershed. In the watershed, all precipitation that falls on the ridges surrounding Newfound Lake flows as streams and groundwater to the lake. The watershed defines the ecological system that provides the Newfound experience and supports the people that live here.

The project team (consisting of professionals from UNH, Plymouth State University (PSU), the Newfound Area School District (NASD), Jeff Taylor &

Associates and the NLRA) have hit the ground running, completing the following major tasks:

- Water quality monitoring was expanded by sampling 30 near-shore locations around the lake for bacteria and nutrients. This sampling will be repeated three more times over the next year to identify areas of concern and to assess remedies.

- Mailing a public opinion survey to 1,900 watershed property owners. This survey will help inform the planning process, and raise awareness of our activities. About 300 responses were received in the first week, and interest is widespread.

- Collecting and analyzing demographic data for growth and population trends. A draft chapter presenting the

*Continued on p. 3*



The Towns of the Newfound Lake Watershed



View from the North End of the Lake

## From the Executive Director

I have had the pleasure of meeting many new friends, seeing new places and learning an amazing amount about the people and history of the Newfound Region. But strange things happen to time during a Newfound summer. On the one hand, cool mornings, lazy afternoons and star-filled evenings create long-lasting memories of a timeless place. On the other hand, the “high summer” season is over in an avalanche of activity, visits, chores and general human bustle.

Our 2005/2006 financial review was completed by in August. This snap-shot of the past two fiscal years showed strong growth in 2006: our assets increased 25% (due mainly to Endowment growth); our cash equivalents increased over 300% (result of 2006 Annual Fund success); and total expenses decreased 18% (due to part-time ED and PD for nine months

of the year). The percentage of expenses on Program Services increased from 71% in 2005 to 74% in 2006.

We are creatively and efficiently improving our organizational management tools – computers, financial systems, membership database and web site. Each of these systems is vital to the success and long-term health of any business. We expect these projects to be completed by the



Friends and family savor the good times at the First Annual BBQ and Blues Summer Social

end of 2007, and to generate both direct and indirect financial benefits moving forward.

During the summer months, Pete and Karen Carey, Liz and Phil Hawkins, Rob and Laura Moore, and Jan and Ron Collins hosted afternoon socials on behalf of the NLRA that provided marvelous opportunities to talk to roughly 75 members and friends. The discussions were lively and valuable, new relationships were started and old acquaintances were renewed. Sharing food, drink and good conversation with wonderful people in the Newfound area: tough job, but someone has to do it!

We also had a blast at the August 11 BBQ and Blues Event that included fine music by a local band, southern-style

*Continued on p. 3*

## President's Message

I am pleased to have this opportunity to inform you that your organization is thriving. The level of activity and public visibility continue to grow through our programs and the Watershed Master Plan project. Our influence is increasing as we build and strengthen relationships with partners in government, business, educational and nonprofit sectors. There is a general “buzz” developing around the possibilities and benefits that watershed-wide planning can bring.

We look to our members and partners to join us in this exciting time to share all your ideas and concerns related to the future of this special region, so that we can both protect and benefit from its bounty. Please take the time to enjoy this newsletter, and be sure to let me know how you want to be involved to help make the Newfound Lake Region Association a vital and sustainable asset to our watershed community.

*Victor Field, President*



*The Monitor* is a publication of the Newfound Lake Region Association.

NLRA Officers and Executive Committee Members:

Victor Field, *President*; Don Martin, *Vice President*; Peter Carey, *Treasurer*; Helga Stamp, *Secretary*;

Trustees: Jan Collins, Bill Fay, Ron Olson, Greg Wagner

Staff: Boyd Smith, *Executive Director*; Martha Twombly, *Program Director*

**NEWFOUND LAKE REGION ASSOCIATION**

800 Lake St. Bristol, NH 03222 P: 603-744-8689 [info@newfoundlake.org](mailto:info@newfoundlake.org)

# Keeping Track® Wildlife Display

About 75 wildlife enthusiasts had a rare opportunity to view an incredible display of wildlife pelts, mounts, skeletons, antlers, and track molds on Sept. 13 at the Newfound Middle School in Bristol. The NLRA and the Newfound Region After School Program hosted Keeping Track®, a non-profit organization founded by Susan Morse in 1994 to teach adults and children how to observe, interpret, record, and monitor evidence of wildlife in their local communities. Almost 100

teams have completed Morse's "University of Nature" and are monitoring wildlife across North America.

Sue is a nationally recognized naturalist and habitat specialist, who presented a slide show of her spectacular wildlife photos, and an interactive talk on the biology and ecology of North American mammals. Morse used humor and personal anecdotes, and some animal vocalizations, to

impress participants on the importance of landscape-level planning to protect wildlife habitat and corridors. She collected these museum-quality specimens during her 30 years of tracking and interpreting wildlife uses of habitat.

Great News! This event attracted about 20 individuals to join Martha Twombly, our Program Director, in creating a Newfound area team to take professional tracking training through Keeping Track! The extensive training is held over 7 day-long field trips between Oct. and May. Three of the days are in VT at the KT headquarters, and three days will be spent in the Newfound watershed.

This tracking initiative is compli-

mentary to the Wildlife Action Plan completed by the NH Fish and Game Department in 2006. Citizen participation in monitoring wildlife, and mapping wildlife movement and uses of the habitat in their home areas can guide local knowledge about important wildlife corridors, and can help local town boards in their land conservation efforts.



---

## EXECUTIVE DIRECTOR

*Continued from p. 2*

BBQ and local ice-cream, and a silent auction of unique and definitely cool experiences. We netted a modest profit, but more importantly a large and diverse group got together in a classic Newfound

setting and had a great time. We plan on doing this again next year, around the same time.

I want to thank all of our members and supporters for making it possible for me to work in the Newfound watershed. Last

but not least, I want to thank our Trustees, and especially the Executive Committee, who have helped me through the very steep learning curve of my first year as your Director.

*Boyd Smith, Executive Director*

---

## EVERY ACRE COUNTS

*Continued from p. 1*

results is on our web site ([www.newfoundlake.org](http://www.newfoundlake.org)).

- Meeting local Planning Boards to obtain copies of the latest Master Plans and local regulations, introduce the project and solicit additional members for our Steering Committee. The results of

the planning analysis will be presented to the public on November 15th at the Slim Baker Lodge in Bristol.

- PSU students are interviewing roughly 60 watershed residents to develop oral histories. The interviews and student reports will be completed by December.

- PSU and the Newfound Area School District are collaborating on curriculum

development that will blend educational requirements with experiential learning opportunities.

The NLRA's role is to ensure our strategic goals continue to be met through the grant activities, to coordinate and augment the project team, to prepare and speak at public meetings, and to satisfy grant administration requirements.

# Programs

## *Floating Classroom Debut!*

Captains Bob Felder, Victor Field, Bill Fay and Joe Allison, along with naturalist Vicki D'Alessandro escorted several groups out onto Newfound Lake for discussions of history, local myths, lake ecology and water quality testing techniques.

We hope to expand the program in 2008. The Floating Classroom again supported youth programs through Audubon, the Circle Program, and Camp Onaway.



The Floating Classroom



2007 Lake Hosts: Chris and Carrie Koch flanking Helga Stamp, Secretary of the NLRA Board of Trustees (and volunteer host), with Francesca Alvino, Christy Maloney, Kevin Arnold, and Brie Gickas of Newfound Regional HS. (Missing from the photo are: students Adam Denoncours, and Lucy Randall-Tapply, and volunteers, Kitty Koch, Ron Olson, Jack Weir, Jeff Hillier, Ed Weber, and Laura Wards).

## *Lake Hosts – Summer 2007*

The summer of 2006 we calculated that 60% of our boaters interviewed (over 2400) had a “medium” to “low” awareness of the invasive species problems. In addition, we had 6 “saves” removing invasive plants from boats entering the lake. So, our schedule was expanded in 2007 to staff the Wellington Boat Launch full time (6 am – 6pm) in the month of July and most of August. Final numbers for 2007 are not yet available, but there seems to be a higher awareness of the need to watch for invasive species. And, while the state has seen an increase in “saves” this summer, we only had one confirmed “save”. But it’s important to KEEP VIGILANT! Funding is provided by the NH Lakes Association, and the NLRA has to match the paid time with volunteer time. Thanks to all our paid and volunteer Lake Hosts!

## *Tributary Monitoring Update*

The dedicated volunteers of the six tributary monitoring teams have completed the first 12 months of this 18-month project to measure the health of streams feeding Newfound Lake. The program includes monitoring 24 locations for water quality and flow to better understand lake inputs, impacts from land use practices and overall health of the tributaries.

A major finding is that storm events bring large amounts of nutrients into the lake. The more common levels of stream flow are typically clear and clean – it is the big events that bring change.

The good news is that while the Newfound watershed is steep and quickly sheds rainfall to the streams and the lake, it is generally well forested, and the woodlands act as effective filters. The cautionary tale is to be sure that the health of these protective woodlands is maintained to reduce the speed and hence nutrient and sediment carrying capability of storm water.

This phase of the tributary monitoring will conclude in December 2007, with a final report from UNH due in April 2008. Future monitoring, performed under the Watershed Master Plan will include monthly sampling from a subset of the current locations and comparison of impaired and non-impaired sub-watersheds to provide a scientific basis for potential land use controls.

# Programs

## *New Lake Conservation Corps program*

The NH Lakes Association Lake Conservation Corps (LCC) is a proposed statewide summer stewardship learning program for 7th - 12th grade students. Paid interns perform shoreline restoration and watershed protection projects with guidance from local science teachers in partnership with local towns, individuals, and local lake associations.

The program's pilot year was facilitated by the Newfound Lake Region Association this summer, with expertise from the Acton Wakefield Watershed Alliance Youth Conservation Corps, and the University of New Hampshire, with funding from the NHLA.

In addition to the local goal of protecting the economic advantage of the natural resources in the Newfound Lake area, the overarching long-term objective is to foster an appreciation among adolescents about environmental issues, and to create a lifelong interest in stewardship, the NH quality of life, and an interest in living permanently in NH. After the pilot program in 2007-09, the program is intended to evolve into a statewide program.

The LCC program will attract students using incentives that include a combination of wages, and course credits or tuition waivers from UNH. The NHLA is working with a statewide bank to create high yield accounts for students to deposit future tuition money that might be 'matched' by the bank or local businesses.

This year local students who worked as Lake Hosts also served as the first Newfound Area Lake Conservation Corps members. Their first project was a rain-garden outside the NLRA office on Lake Street, to help treat stormwater draining from a newly paved parking area before it reaches the Newfound River.

## *What's a Raingarden???*

Rain gardens are attractive and functional landscaped areas that are designed to capture and filter stormwater from roofs, driveways, and other hard surfaces. They collect water in bowl-shaped, vegetated areas, and allow it to slowly soak into the ground. This reduces the potential for erosion, and helps protect the water quality in our lakes, streams, and rivers by reducing the amount of polluted runoff reaching these resources.



Raingarden, before



Raingarden, after

## **The NLRA's Lake Conservation Corps members included:**

Brie Gickas, Christy Maloney, Kevin Arnold, Ashley Kuplin, and Billy Trethaway.

## **Materials, expertise, and tools were generously donated by:**

Kuplin Land Services,  
Alexandria, NH  
Belknap Landscaping,  
Guilford, NH  
Simple by Nature,  
New Hampton, NH  
University of New  
Hampshire, Durham, NH  
Acton-Wakefield Watershed  
Alliance Youth  
Conservation Corps

## Watershed Kickoff Meeting a Success

During a late August evening in the Alexandria Old Town Hall, about 30 members of the public braved one heck of a thunder storm to attend the first public meeting of Every Acre Counts: The Newfound Watershed Master Plan. The people heard Steve Whitman present the results of his demographic analysis, which uncovered some important trends that will affect the area for years to come:

- Five communities cover 93% of the watershed and have 99% of the population.
- The watershed population increased 132% from 1970 to 2005 (faster than the state).
- Population is expected to increase an additional 19% by 2030.
- Watershed population roughly doubles during the summer.

What these and other demographic data make clear is that continued growth will occur, creating needs that must be met by balancing a variety of natural and human resources. The draft Demographic and Growth Assessment chapter is available at [www.newfoundlake.org](http://www.newfoundlake.org).

Most exciting and rewarding were the audience questions and ensuing conversations. The theme of the Hill and Lake Clans was raised repeatedly, illustrating that many people in the watershed do

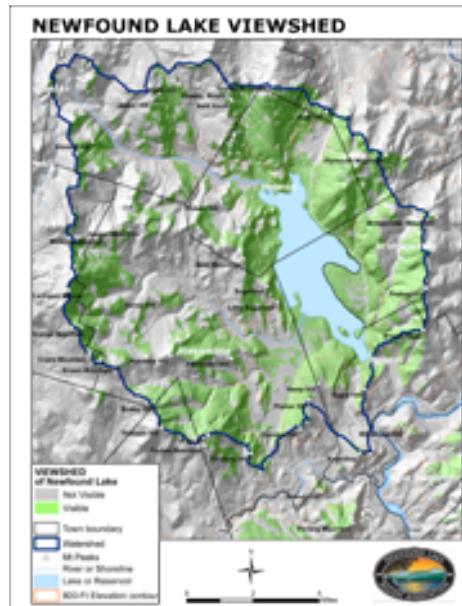


Steve Whitman presents demographic information in Alexandria

not focus solely on the lake. The local Boy Scout Troop leader and his son attended to learn more about how the boys could become involved. People exhibited a desire to get to work – the initial visioning time horizon was moved from 2050 to 2020.

## Land Conservation Central to Watershed Planning

The NLRA has long recognized land conservation as an important ingredient in water resource management. By maintaining sustainable forestry, expanding local agriculture and practicing low-impact development, the watershed will remain healthy and productive.



Inspired by a recent inquiry about land conservation, we have accelerated our efforts to create a strategic plan for this important function. Our Director is meeting with the Forest Society this fall to explore mutually beneficial partnership terms. This model may be expanded to include other watershed partners, such as the Audubon Society, the Appalachian Mountain Club and local towns. We are creating maps of the watershed to pri-



Upland Pond, Alexandria

oritize our efforts. For example, the accompanying map shows views from the lake, that is, what parts of the surrounding hills would be visible from the lake or shoreline if there were no obstructions (perish the thought!)

We are all ultimately connected to the land. By finding ways to make conservation an economic benefit as well as to maintain what property owners and other stakeholders most value, we can truly preserve much of what we have and minimize the adverse “footprint” of future growth.

## Newfound River Dams

The fate of the Upper and Lower Newfound River dams that were threatened by the May 2006 floods is slowly being resolved. Early September communications between the NH Department of Environmental Services and the Town of Bristol indicate that Freudenberg NOK (the owner) is working to assess the repairs needed to make the dams safe, while negotiating with the DES about dam hazard classification (a dam safety rating). Final design recommendations are expected before the end of this year. The NLRA has contacted both the state and the town to stay current on this important project and to assist where possible.

# Membership

The Newfound Lake Region Association was founded in 1971 by inspired men and women dedicated to preserving the beauty and values of Newfound Lake. Over the years, new members joined and contributed significantly to keep the organization alive and well. As a result of the labors of our founders and supporters we are here in 2007, able to advance the protection of Newfound Lake and its watershed.

The continued success of our organization comes from the support of our members – the greatest resource we have! Currently, there are roughly 425 household and business members, a 5% increase from the prior year. Our 2007 income was 89% member donations, with the remainder coming from grants, events

and earned income. Under our Board-approved “5 percent rule” and in accordance with prudent investment practices we can draw up to 5% of our endowment dividends and interest (roughly \$10,000 in 2007) for operations. For the past two years the interest and dividends from our endowment have been reinvested.

Each year we conduct fundraising drives in the spring (Membership) and fall (Annual Fund). Donations from these efforts are used for operations – the daily expenses for staff that run our programs, office rent and supplies, boat expenses related to our Floating Classroom and water monitoring programs, professional fees and insurance and various other costs related to doing business.

We will continue to work hard to

expand membership, pursue grant and foundation funding and seek viable opportunities to increase our endowment income. Creating opportunities to match directed giving to specific programs and projects is also part of our strategy towards organizational sustainability. We are always looking for compassionate and committed individuals to work on our various committees and in leadership roles to ensure the long-term health of the organization.

We hope to hear from you if you have any questions about this message, and if you are interested in other forms of sustainable donations to the Newfound Lake Region Association or serving as a volunteer. Thank you for your support!

## Around the Lake Cont'd

### Bristol Focus on Avery-Crouse Public Beach

As reported in the September 20, 2007 Plymouth Record-Enterprise, the Town of Bristol is addressing concerns about storm water runoff from Route 3A to the Avery-Crouse beach, located at the south end of the lake. Apparently, storm water discharges directly to the lake through culverts and overland flow, pooling on the beach and potentially impacting water quality. The Town's efforts to address this problem are appreciated, and the NLRA will assist the Town as part of our overall goal to improve storm water management under the Watershed Master Plan. The Town of Bristol is holding a public meeting on this topic on October 25th at 7:30 p.m. in the Bristol Town Offices at 230 Lake St.



## Membership Form

**Member support is vital to help us protect Newfound Lake.  
Please renew your membership or join NLRA today!**

Please mail this form and your check, payable to NLRA, to:  
NLRA, 800 Lake St. Bristol, NH 03222.

Name \_\_\_\_\_

Email address: \_\_\_\_\_

Permanent Mailing Address: \_\_\_\_\_

Summer Mailing Address: \_\_\_\_\_

Please check here if you are interested in receiving email communications (web-based newsletters, annual report, news updates).

### Membership Categories:

- |                                      |        |
|--------------------------------------|--------|
| <input type="checkbox"/> Steward     | \$2000 |
| <input type="checkbox"/> Newfounder  | \$1000 |
| <input type="checkbox"/> Sustaining  | \$500  |
| <input type="checkbox"/> Supporting  | \$250  |
| <input type="checkbox"/> Maintaining | \$100  |
| <input type="checkbox"/> Family      | \$50   |
| <input type="checkbox"/> Individual  | \$35   |

### Volunteer opportunities:

Please check all that apply.

- |  |
|--|
| <input type="checkbox"/> Lake Host/Invasive Species Protection |
| <input type="checkbox"/> Water Quality Monitoring/Education    |
| <input type="checkbox"/> Watershed Mapping/Land Conservation   |
| <input type="checkbox"/> Events/Publications/Outreach          |
| <input type="checkbox"/> Membership Development                |
| <input type="checkbox"/> Strategic Planning                    |

# Calendar



**November 1**  
Intent to Cut Timber for Municipal Boards,  
Bristol Town Offices, 8 am – 2:30 pm

**November 15**  
Every Acre Counts – Master Plan and Rules  
Analysis, Slim Baker Lodge, Bristol,  
7 – 9 pm

**December 5**  
Every Acre Counts: Steering Committee  
Meeting, Plymouth State University  
9–11 am

*Watch local media and [www.newfoundlake.org](http://www.newfoundlake.org)  
for times and locations of upcoming events.*

## New Business Members

- Kuplin Land Services
- Group East Financial Services, Inc.
- Hebron Village Store
- Franklin Savings Bank
- The Mill Ice Cream and Fudge Factory
- Bristol Insurance Agency
- Gilly's Restaurant



### Tote Bags and T's!

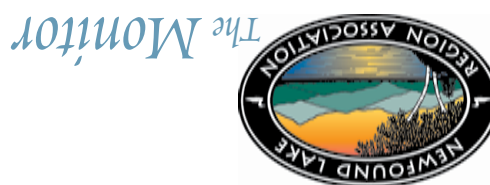
*Our new logo shows your pride in our association with eye-grabbing colors and design! Stop by the office to pick up yours – T's are \$ 10.00 and canvas Totes are \$ 20.00. Add \$ 7.00 for shipping.*

*♻️ Printed on recycled paper.*

**Visit our website for new  
information and upcoming workshops:  
[www.newfoundlake.org](http://www.newfoundlake.org)**

RETURN SERVICE REQUESTED

info@newfoundlake.org  
Telephone and facsimile: 603.744.8689  
800 Lake St. • Bristol, New Hampshire 03222  
Newfound Lake Region Association



Non-Profit  
Organization  
US Postage  
PAID  
Keene, NH 03431  
Permit No. 142